

RESULTS REPORT

LAUNCHING THE CENTER

Highlights from the initial months of development as we reinvent The Center into a resource for all schools and partners

In April 2016, the Community Service Council transformed the TACSI Resource Center into the all new Center for Community School Strategies, redefining our work and rebranding our image to become a service and resource for all schools and community partners across Oklahoma. A key component of this reinvention was the development of The Center as an official regional partner of the National Center for Community Schools (of the Children's Aid Society in New York City).

To advance community schools as a model for increased educational equity and opportunity, The Center identified our work as "supporting schools in building supportive learning environments through evidence- and research-based community school strategies." Our next steps in vitalizing The Center were to outline our Focus Areas, articulate Our Values, Mission and Vision, define our Menu of Services, and promote the Six Key Strategies for Successful Implementation. We accomplished all of this through the design of a new website, brochure, flyer, and monthly e-newsletter, and the development and engagement of an Advisory Council, consisting of leaders from Tulsa's education and business sectors.

OUR WEBSITE csstrategies.org

OUR FOCUS AREAS



WHOLE CHILD SUPPORTS



EARLY CHILDHOOD



FAMILY ENGAGEMENT



EXPANDED LEARNING



SCHOOL CULTURE



RESULTS-BASED PARTNERSHIPS

OUR VALUES

- 1 Before children can learn in schools, their basic needs must be met.
- 2 All children need an engaged community to thrive.

OUR MISSION

Through consultation, training and advocacy, we help schools, districts and stakeholders implement Community School strategies to create welcoming community hubs which engage, support and strengthen students, families and neighborhoods.

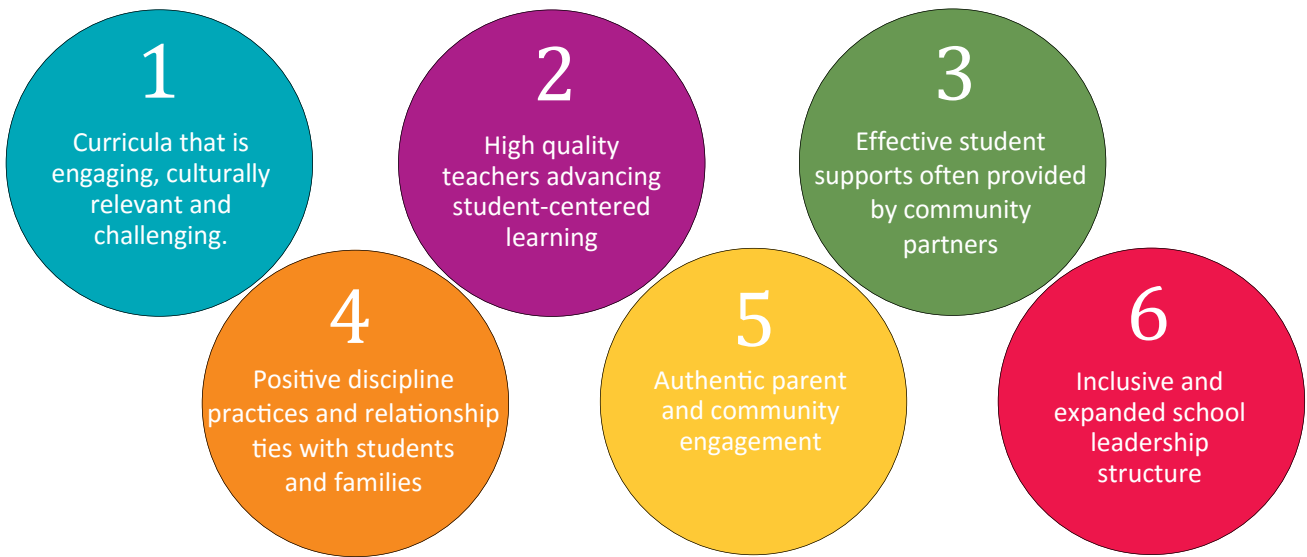
OUR VISION

Educational Equity and Opportunity for Every Child.

LAYING THE GROUNDWORK...

Six Strategies for Successful Community School Implementation

The February 2016 report from the Center for Popular Democracy, Coalition for Community Schools/Institute for Educational Leadership and Southern Education Foundation entitled *Community Schools: Transforming Struggling Schools into Thriving Schools* was instrumental in developing the foundation for our work. According to the report, when community schools effectively implement the **six key strategies** outlined below, the results can be **sustainably transformational**: increasing school attendance, decreasing suspensions and expulsions, creating healthy and safe communities, and improving academic outcomes. [Click here to read the report >](#)



OUR TEAM

From Left: **Paige Whalen**, Center Program Manager; **Kelly Kruggel**, Center Organizational Manager; **Lesley Gudgel**, Director of Sprouts Child Development Initiative; **Robin Hicks**, Program Manager for Children’s Behavioral Health; **Maria Elena Kuykendall**, Community Adviser for Power of Families Project; **Christina Starzl Mendoza**, Coordinator, Power of Families Project and Conexiones



OUR WORK SO FAR...

To ensure a successful launch for The Center, we began our work by aligning the core components of TACSI Community Schools with our team areas of expertise to formalize The Center’s new Focus Areas and construct a comprehensive Menu of Services. This report and all subsequent reports will be organized by these Six Focus Areas, and our performance will be measured through indicators related to each.

[Click here](#) to view our **Menu of Services** on our website

[Click here](#) to learn more about our **Focus Areas**



Whole Child Supports

- ▶ Aligned our work with **Children's Behavioral Health** (another program of CSC) to support needs in schools and the community as it relates to mental health/behavior concerns, coordination of services, and facilitation of trainings
- ▶ Organized six hour training/PD event titled **"Understanding Trauma and its Impact on the Classroom"** which brought in 120+ participants, seven school districts, and several community organizations. This was free and open to the community in partnership with Broken Arrow Public Schools.
- ▶ Our Power of Families Project began work organizing a **Latino Community Health Fair** to be held at Disney Elementary on Saturday, October 15th in partnership with OSU and Coalition of Hispanic Organization.
- ▶ Strengthened partnership with RECESS+ to assist with self-regulation for the classroom and provide training on this technique to school staff. The aligned goal is to support social/emotional intelligence and physical fitness in children.

Quality Early Childhood

- ▶ **Healthy Women Healthy Futures Grant** awarded to CSC involving The Center and CSC's Family Health Coalition. PFP Promotoras' duties have expanded to include collecting additional health-related data and supporting pregnant mothers.
- ▶ Coordinated **Summer Transition Camps** held at three Union schools with over 60 children and families in attendance. The camps support a healthy transition into the school environment for children and families, many of whom have had no prior early childhood experience.
- ▶ Developed partnership with TPS's Remington Elementary to provide **outreach, developmental screenings and promotor-like support** to children under five in the school community and surrounding apartment buildings.
- ▶ Paige Whalen serves on the **OKDHS Child Care Advisory Board and QRIS Subcommittee** that seek to improve the quality of early childhood programs in Oklahoma.
- ▶ **Data Insight:** PFP reports that **82%** of children under the age of 5 were reported to not be attending any formal early childcare facility; Of the 211 children in the PFP who received the ASQ developmental screening, **64%** were identified as needing further monitoring and/or intervention services.

Expanded Learning/Out-of-School-Time

- ▶ Began new collaboration with CSC's Child Care Resource Center to **increase expanded learning opportunities** for both early childhood and school-age children. Introduced CCRC to the statewide expanded learning network (OPEL) to help strengthen the local capacity for OST in child care centers.

- ▶ Offering continued support as a **founding member of Oklahoma Partnership for Expanded Learning (OPEL)** to help strengthen the local capacity of schools and community partners to implement and sustain high quality programming.
- ▶ Led Union Community School Coordinators in a formal **Resource Development Planning** process to secure funds and partners to support expanded learning opportunities.

Family & Community Engagement

- ▶ Hosted our first mini-conference: **"Engaging Latino Families in Education"**, with over 60 participants, ranging from early childhood to higher education professionals.
- ▶ New partnership with OU's Health Sciences Center will involve our promotoras' assistance in a study that will identify stressors in the lives of Latino mothers in an effort to eventually define solutions to reducing this stress
- ▶ Developed partnership with **Tulsa Public Schools** to assist the district with engaging Latino families, specifically as it relates to attendance and chronic absence issues.
- ▶ Partnered with Martin Regional Library to host **"Back to School Resource Fair"** held on August 19, mobilizing over 50 organizations to provide resources/information, and donate backpacks/school supplies, to help families feel better prepared for school. More than 900 people attended this event.
- ▶ Began work planning a **Community Education Forum** to promote The Center and Community Schools with local and national education speakers and advocates.

Positive School Culture/Climate

- ▶ Our summer 2016 trainings "Trauma in the Classroom" and "Engaging Latino Families in Education" both encouraged and recognized the **need for mutual trust** to exist among administration, teachers, parents and students to build a positive culture of belonging, which is a cornerstone of successful Community School work.
- ▶ Engaged Dr. Curt Adams of the OU Center for Educational Policy to conduct an **analysis of Culture & Climate surveys** on both Community Schools and traditional schools to determine strengths and opportunities related to positive culture/climate.



The Center hosted our launch party at the National Community Schools Forum in New Mexico, seen here celebrating with local and national partners in April 2016.

*"People support what they help create."
-Margaret Wheatley*

Consultation and Partnerships

- ▶ Consulted several local, regional and national groups on Tulsa's Community School model, including school districts, school boards and non-profits. To date, we have provided services and resources to **10 different states (ranging from Texas to New Jersey) and six local school districts.**
- ▶ Partnered with **Jenks Public Schools** to have a district leader and principal attend the National Community Schools Forum in April 2016 with The Center to learn more about supporting the needs of families and children. Jenks will begin initial steps toward implementation of the Community School model at East Elementary in Fall 2016.
- ▶ Collaborated with **Broken Arrow Public Schools** leadership to provide training/PD for staff on trauma in the classroom and to provide developmental screening opportunities for BA families via Sprouts Child Development Initiative.
- ▶ Developed a formal partnership through an MOU with Redeemer Covenant Church to support a Parent Facilitator at **TPS' Mark Twain Elementary** to engage families and community partners, and to coordinate afterschool programs.
- ▶ Continuing our support of **Oklahoma City Public Schools'** pilot Community School, Edgemere Elementary. Paige Whalen, Program Manager, was a featured speaker at an education panel for the OKC community in July 2016. Paige spoke on Community Schools and the progress being made at Edgemere Elementary.

OUR NEXT STEPS...

- ▶ Host a Tulsa-based **Community Education Forum** to promote the Center and Community Schools, with the intention to host national speakers and bring together local stakeholders and advocates.
- ▶ Facilitate an **"Understanding Trauma and its Impact on the Classroom"** Version 2.0 to address specific strategies followed by a Version 3.0 with focus on administrators and policy changes that support a whole child approach to children in the classroom.
- ▶ Promote our finalized Menu of Services to local district leadership; Engage community partners to support their work in local schools and identify areas for collaboration



- ▶ The Center continues TACSI's decade-long support of **Union Public Schools' Community Schools.** At Union, Community Schools are one of the district's four pillars, and the model is highly prioritized and effectively implemented throughout the entire district. Currently, Union has **eight full-time Community School Coordinators** across nine Community Schools. *Seen above:* Center staff with Union Community School Coordinators in August 2016.
- ▶ We are now meeting and strategizing monthly with **Impact Tulsa's** Partner Engagement Director to align our work in early childhood and whole child education, and determine areas for collaboration.