



International Infant & Toddler Conference

A World of Possibilities



It All Starts Here

April 5-8, 2017
Tulsa, OK USA



International Infant & Toddler Conference

Platinum Sponsors



Gold & Silver Sponsors



No-Host Dining *(offered Friday evening)*

An interesting component of the International Infant and Toddler Conference is the opportunity to meet colleagues from around the world and initiate an ongoing dialogue. To facilitate this, you are invited to participate in the No-Host Dining Program. To join, visit Conference Registration when you arrive at the Downtown DoubleTree and add your name to the list for the restaurant of your choice. Participation is limited; you are encouraged to make your selection early. As an added bonus, several presenters will be joining the no-host dining option on Friday evening.

FREE trolley transportation will be provided for everyone that evening, whether you choose a No-host Dining location or go out on your own. Participants are responsible for paying for their own meal. A trolley map is available at Registration. The trolley will run from 5:00 p.m.-10:00 p.m.

After the Conference

Evaluations and a post-conference survey will be available online, we will email you the link, and look forward to your comments! Additionally we will post all presentations and hand-outs made available by presenters.

Exhibitors

Please take a moment to stop by our exhibitor booths during lunch and breaks. We appreciate our exhibitors and their contribution to early childhood. Exhibitors include: Branagh Information Group, Inc., Center for Early Childhood Professional Development, Early Learning Innovations, LLC, Kaplan Early Learning Company, KF Enterprises - Storytellers & Troubadors, Lor Enterprises, Perfectly Posh – James Posh Fun, Pikler USA as well as a presenters book table.

Special Thanks

Special thanks to the following agencies for their dedication, time, energy and resources given to make the 5th International Infant Toddler Conference a success: Barnes and Noble, Center for Early Childhood Professional Development, Kaplan Early Learning Company, Muskogee Creek Nation, North Eastern State University, Oklahoma University-Tulsa Project Launch, Riverfield Country Day School, Rodgers County Health Department, Tulsa Community College, Tulsa Educare, and Tulsa Technology Center. We would also like to thank the entire 2017 Conference Planning Committee who did an amazing job making this year's conference possible. Finally, thank you to all of our sponsors who continue to support the early childhood professionals in Tulsa and around the state of Oklahoma.

8:30 a.m.-3:30 p.m.

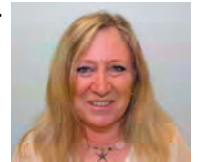
Council Oak Room

Relationship-Based and Reflective Practice in Early Childhood Programs

Relationships impact other relationships. This simple statement offers a powerful tool for professionals who are seeking to handle the array of questions, surprises, and dilemmas that arise in a single day of working with very young children and their families. This session will provide an overview of relationship-based and reflective practice as well as discuss and practice skills and strategies to build these practices into our work with staff, young children and families.



Jodi Whiteman, M.Ed., CEIM



Kathleen Mulrooney, MA, LPC, IMH-E IV

9:00 a.m.-3:30 p.m.
(Bus leaves at 8:30 a.m.)

Riverfield Country Day Schools

Rhythm of wonder: Exploring and creating relationships with the natural world

Join Riverfield Country Day School for a day of intrigue, investigation, and creativity in connection with the natural world. Participants will have the opportunity to hear children's stories about their experiences in nature, explore the 120-acre school campus including the woods, a barnyard and many playgrounds. You will also have opportunities for large and small group discussions, hands-on experiences, and encounters with the big ideas that are inherent with a child's relationships throughout early childhood.



5:30-7:30 p.m.

Art Speaks at TCC's Metro Campus

Sponsored by
Tulsa Community College

Art Speaks asks one basic question: in a time where reaching out across our differences is more important than ever, what role do conversation and dialogue play in our different fields? Educators, journalists, and community partners come together to discuss these important issues.

| | |
|------------------|--|
| What: | Arts Speaks A Panel Discussion and Poster Presentation |
| When: | April 5 th , 2017 |
| Location: | Tulsa Community College – Metro Campus 909 South Boston Avenue Tulsa, OK 74119 Student Union Commons Area |
| Time: | 5:30pm – 7:30pm Poster Presentation Available 5:30pm – 7:30pm Panel Presentation 6:00pm – 7:00pm |
| Cost: | Free (Light hors d'oeuvres available while supplies last) |

Thursday, April 6, 2017

7:30-8:30 a.m.

Registration & Continental Breakfast

8:30-10:00 a.m.

Welcome, Opening Remarks & Keynote

International Ballroom

A Bollywood medley presented by Kripalaya Dance Academy

The performers are Priya Raju, director of the Academy, and Kristin Mattix. Choreographed by Priya Raju

Toni and Robin Christie

Respectful People, Places, and Things

The New Zealand Early Childhood Curriculum, Te Whariki, refers to “people, places and things” as the learning context for young children. How do people show respect for children? What kind of places are respectful spaces for children? What are the things available to children within the environment and how do they demonstrate respect for the child? This opening keynote from Toni and Robin will set the stage for a great conference of learning and thinking respectfully for children.

10:15-11:45 a.m.

Breakout Sessions

Windsor Ballroom

Robin Christie

Leading Change in Your Outdoor Learning Spaces

Join ECE teacher and designer Robin Christie for a wide-ranging exploration of early childhood playgrounds. Learn over-arching design principles, examine current trends and philosophies, and view hundreds of full-colour images drawn from across New Zealand and the world. This is a fantastic chance to share ideas with a passionate, articulate professional with twenty-five years of experience designing and building inspiring spaces for young children

Buckingham Ballroom

Toni Christie

A Peaceful Curriculum for Infants and Toddlers

This workshop will cover a range of teaching practices and strategies that are developmentally respectful and responsive to the needs of infants and toddlers. Toni will unpack the characteristics of the three stages of infancy, primary caregiving, free movement, rituals, and respectful care. You will come away with many ideas for creating a thoughtful and creative, relationship-based program that will nurture the hearts and minds of infants and toddlers in your care.

Council Oak Ballroom

Kim Quinn

Mindfulness and Learning in the 21st Century

Mindfulness is being talked about and studied in almost every profession and its benefits are being seen and understood more and more. Mindfulness is a tool that can be learned and used by anyone, and early childhood classrooms are an ideal setting for learning about mindfulness. In this session, we'll explore and try some of the simple tools, activities and habits that promote mindfulness and learn how it improves learning, and even physical and mental health.

Remington

Janine J. Joseph

The New ITERS-3rd Edition, the New Generation of Rating Scales

The ITERS 3rd edition continues the primary intent to measure global quality of learning environments for infants and toddlers. This session will explain the newest updates and their importance to measuring quality programs for young children. Since the ITERS-3 has more emphasis on interaction and the teacher's role, this training will provide details on how this information is collected and recognized in various items.

Thursday, April 6, 2017

2nd Level Ballroom

Tessa Chesher, DO

Feeding and Sleep Disorders in Infants and Young Children

Participants in this two-part session will look at two of the primary activities of infants and young children - sleeping and eating. Part one will focus on sleep, basic ideas for common sleep problems, and when to consider referral for sleep concerns in young children. Part two will examine the main feeding disorders of infants and young children, basic treatments, and when to consider referral for specialized treatment.

11:45 a.m.-1:00 p.m.

Lunch on Your Own Please visit our vendor booths.

Made Market is available for lunch in the hotel. In addition, there are many options within walking distance of the hotel. Stop at the registration desk if you would like more information.

1:00-2:15 p.m.

Afternoon Keynote

International Ballroom

Tamar Jacobson, Ph.D

When Teachers Face Themselves: Learning What Makes Us Tick Emotionally When We Discipline Young Children.

Traditionally, early childhood teachers are taught strategies as tools or a “quick fix” to control children’s behaviors. This presentation is based on how we filter our understanding of discipline through emotional memory of punishment - how we *perceive* children’s behaviors in connection with how we remember being treated as young children. Self reflection about what makes us *tick* emotionally is critical in helping children manage their own feelings.

2:30-4:00 p.m.

Breakout Sessions

Windsor Ballroom

Tamar Jacobson, Ph.D

When Teachers Face

Themselves: Learning What Makes Us Tick Emotionally When We Discipline Young Children

The break-out session will be an extension of the keynote, and include a discussion about children needing our attention, and what we can do to give it to them. This presentation challenges early childhood teachers to reflect on their own emotional histories, and find strategies for responding to children in ways that support emotional health and development. [This presentation is adapted from relevant sections of my book: Jacobson, T. (2008). Don’t Get So Upset! Help Young Children Manage Their Feelings by Understanding Your Own. St. Paul, M.N.: Redleaf Press]

Buckingham

Toni Christie

Leading with Heart
and Soul

This workshop will share a values-based approach to leadership. With more than 20 years of leadership experience, Toni will share her wit, wisdom, and lessons learned from leading teams. Participants will discuss and explore the following twelve core values for leadership in education: Be courageous, Dream big, Serve others, Have empathy, Foster loyalty, Be honest, Display grace, Encourage creativity, Create joy, Show gratitude, Empower others, Model respect.



Thursday, April 6, 2017

Council Oak Ballroom

Beth Sullins & Cristy Roberts

**Tens Years of Research in Tulsa:
How the ECEI is Researching Infants,
Toddlers, Twos and Threes, Why It Matters**

If you've ever wondered what a baby's behavior tells you, or why a toddler chooses one activity over another, you're thinking like a researcher. At the Early Childhood Education Institute (ECEI), we help early childhood educators "embrace their inner nerds" to use research and data in their day-to-day work of caring for young children. Come learn more about the ECEI, about the current state of research in the growing field of infant/toddler care and education, and new findings that can help you in your work with young children.

Remington

Debbie Laurin

**Navajo saying: The Sacred Begins at the
Tip of the Tongue: Caregiver Types of Talk with Infants and Toddlers**

Cultivating authentic, respectful communication with infants and toddlers requires skillful observation, practice, and reexamining personal habits of speech. In this presentation, participants gain new understanding of serve and return communication and types of talk to promote communication.

2nd Floor Ballroom

Melinda Belcher

**Are you Ready? Disaster
Preparedness for Child Care**

When disaster strikes, young children are among the most vulnerable. Learn to identify hazards and risks that affect your program, better understand leading practices for protecting children in your care, and become more familiar with emergency standards.

4:15 p.m.

Transportation to Promenade Mall

Meet in the Hotel Lobby

A chance to shop and have dinner before the evening event-walking distance to Seed Sower Event

5:30 p.m.

Transportation to University of Oklahoma

Meet in the Hotel Lobby

What if Everyone Understood Child Development?

Presented by **Rae Pica**



Thursday, April 6, 2017

6 - 8 p.m. (2 hours of Formal training OPDR)

**Perkins Auditorium
Schusterman Learning Center
41st & Yale, Tulsa**

Based on her popular book piece of the same name, this keynote explores the possibilities for children's lives and education if teachers, parents, and policymakers fully comprehended child development. What changes would occur in schools and homes? How would it affect you? Rae invites you to join her in imagining a brand new world in which the unique and magical period of childhood is understood and valued.

Books will be available on-site for purchase from Barnes and Noble Booksellers.
Coffee, water and cookies provided by Tulsa Early Childhood Association.

Friday, April 7, 2017

7:30-8:30 a.m. Registration and Continental Breakfast

8:30-10:00 a.m. Welcome, Opening and Keynote

International Ballroom

Rae Pica

Educating the Whole Child – Thinking, Feeling, Moving:

Developmentally appropriate practice dictates that we educate the whole child in an integrated fashion. But more than ever the trend is toward the mind and body as separate entities, with children regarded as existing only from the neck up. We have the research that proves how children learn; now we have to implement best practice! Rae's presentation informs, entertains, and empowers as she explores the possibilities for uniting mind and body.

10:15-11:45 a.m. Breakout Sessions

Windsor

Rae Pica

Toddlers Moving & Learning

Toddlers need—and love—to move! Young children are ready to use their muscles and minds as they stretch, dance, wiggle, explore, and learn. This workshop explores developmentally appropriate activities designed to help toddlers channel their energy in creative, beneficial ways as they develop habits that encourage lifelong health and fitness and success in all areas of learning.

Buckingham

Paulina Zawadzka-Featured Presenter

Our Children Today

A presentation showing certain changes related to child's development in 21st century in the United States and Central and Eastern Europe. In this busy and very noisy world, we often lose direction. Choosing kindergarten is becoming as important as choosing a University. By focusing on tomorrow we've ignored what keeps children occupied today and what makes them happy, sad, surprised or angry now. We cannot let these concerns steal our children's lives. Parents are worried and the kids just want to be kids!

Council Oak

**Lisa Eshenour, Blanca Gonzalez
& Imelda Galvez**

**Supporting Infant– Toddler
Dual Language Learning in
Early Childcare Settings**

This session will focus on strategies for enhancing dual language learning with infants and toddlers. The session will begin with a brief review of current research findings on best strategies for supporting dual language learning. Video clips of infants and toddlers engaged in dual language learning will be presented and discussed with participants. Attendees will have opportunities to engage in small group discussions exploring and analyzing infant-toddler dual language strategies that support classroom and home learning experiences.

Remington

**Teresa Berg, Ph.D
Susan Patrick, Ph.D**

**Quality Care: Unlocking the Future
Through Relationship Based Caregiving**

Promoting quality early intervention services using relationship-based practices inspired by the Pikler® Approach

2nd Level Ballroom

Ken & Georgia Frawley

Babies and Toddlers Can Talk!

Learn to Use ASL Combined with Music and Activities

This fun hands-on American Sign Language (ASL) workshop will provide participants with dozens of songs and activities to use with babies and toddlers. ASL can provide hearing children with a way to communicate, increase their vocabulary, and stimulate brain development. No previous signing or singing ability necessary.

12:00-1:00 p.m.

Lunch

TCC Signature Quartet

International Ballroom

Barnes & Noble Selling Books in Foyer

Friday, April 7, 2017

1:00-2:15 p.m.

Afternoon Keynote

Elsa Chahin and Peter Mangione, Ph.D.

The Gift of Play: Recognizing and Respecting Young Children's Amazing Possibilities

The way young children go about play is very different from the way adults do. Research shows us that the direction of young children's play leads to unforeseen possibilities. This presentation will explore the meaning of play for young children and for the adults who care for them. What are the conditions necessary in order to respectfully facilitate young children's play? This question will be addressed through analysis, observation and dialogue.

2:30-4:00 p.m.

Breakout Sessions

Windsor

Peter Mangione, Ph.D.

Two-Way Communication:

Learning the Infant's Language as the Infant Learns Ours

This session will focus on how early language develops through our responsive communication with infants. Recent research on early brain development and language development will be discussed. Of particular concern will be how reciprocal communication in relationships establishes the foundation for language development. Session participants will explore how empathetic observing and listening allows us to support the baby's active engagement in making sense of the world of people and things. Video examples of interactions with infants will be shown to illustrate key points.

Buckingham

Brenda Butchee

Why Time Out is Out

This presentation will discuss why we are moving away from Time-Outs and toward Time-In with young children as a way to help them manage feelings and behavior. Our expanded knowledge of Executive Function, Self-Regulation and Co-Regulation have played a role in the changes that are occurring in behavior management techniques.

Council Oak Ballroom

Rebecca Taylor & Carol Rowland

Moving Matters:

Becoming a Motor-vater

Come join the movement!! From birth, babies show us they need to move. The body is the brain's first teacher and the lesson plan is "movement". Every move a young child make (intentional or accidental) leads to learning. Movement plays a vital role in helping little ones reach their potential. We as parents, educators and caregivers are a key component in the "move to learn" philosophy. We will be exploring how movement enhances all learning.

Remington

Dr Mira Tetkowsky Berkley & Colleen Walling

Making Learning Visible!

Lessons Learned from Reggio-Inspired Infant/Toddler Programs

Our Italian colleagues in Reggio Emilia and Pistoia have taught us much about the importance of documentation in programs for young children. Documentation is a powerful way to share young children's learning experiences as well as to enrich our work as teachers. How can we use what we learn from the children to guide our work? In this session, high quality examples of documentation from infant/toddler programs will be presented, with suggestions for getting started.

2nd Floor Ballroom

Carol Morris, Ph.D

The Mathematician in the Crib

Infants and toddlers understand more about numbers and are developing numerical concepts at much younger ages than you might think! This presentation will show you many ways that infants and toddlers are exposed to numerical concepts through their daily experiences and we will explore ways for you to expand their learning. Math is everywhere!

6:00-9:30 p.m.

No Host Dining
Free Trolleys for Everyone!

See Details on Page 2

Saturday, April 8, 2017

7:30-8:30 a.m.

Registration and Coffee (Breakfast on Your Own)

8:30-10:00 a.m.

Breakout Sessions

Windsor

Barbara Sorrels-Featured Presenter

Nurturing Attachment

Every child needs to know there is someone who is absolutely crazy about them. The foundation of mental health, learning and well-being is rooted in secure attachment relationships with primary caregivers. The mental health community is increasingly recognizing the important role that early childhood teachers and caregivers play in the mental health of children. This workshop will explain the basic forms of attachment; the link between attachment, behavior and learning; and help adults learn how to create an attachment rich environment in the early childhood setting.

Buckingham

Betty Blaize

A pictorial view of China's Anji Play and the implications for Infant Toddler Care in America.

Connect the dots between Reggio Emilia, the Pikler philosophy and Anji Play and view one program in the United States exploring Anji Play.

Council Oak Ballroom

Paulina Zawadzka-Featured Presenter

Tree of Life: Supporting Executive Functioning in Young Children

More and more children are having problems with being focused and flexible during their daily activities. Interactions with others are not easy for Toddlers. They have difficulty taking turns, sharing and controlling their emotions. Children in age 2 and 3 lack social skills, experience difficulties with communication and have problems with executive functions. These are also the main characteristics of children with autism spectrum. The use of technology, overstimulation and not enough social interactions are blurring the line between the behaviors of children with autism spectrum and those without it. If we want children to "grow" and "blossom" we have to answer important questions: 1) How do we give our children the perfect environment so they can be more independent? 2) How do we improve their flexibility, working memory, self-control, as well as their self-confidence and ability to cooperate?

Remington

Beverly Kovach & Dr. Susan Patrick

Creative Learning Environments

Join us as we learn how to create infant and toddler environments that support creativity and exploration, build concentration, and foster independence. In this session, we will explore strategies for using the learning environment to decrease conflict and increase infant and toddlers' independent activity and self-regulation.

2nd Level Ballroom

Nichole Dewberry & Jana Cornelius

Intentional Teaching:

Promoting Meaningful Learning Experiences with Infants and Toddlers

All early care providers of infants and toddlers face the same challenge—finding strategies that will lead to a more purposeful learning experience for children. All are striving to become intentional teachers. This presentation will provide suggestions on organizing meaningful learning experiences for infants and toddlers that are thoughtfully planned and purposefully connected to specific goals based on each child's needs and interests.

10:15-11:45

Breakout Sessions

Windsor

Elsa Chahin

I Am Not A Toy: Respecting Young Children's Competence Through Reverent, Peaceful Care

Children move, play and learn with their whole being: their minds, bodies and hearts. Adults can support this learning with a careful and caring approach that understands and respects the importance of children's autonomy. This workshop will explore the Pikler® pedagogy, that of raising happy healthy children. Decades of research from the Pikler® Institute in Budapest, Hungary suggest that young children thrive when they are seen as participants in their own care and initiators of their own play; and never regarded as objects or passive recipients. We will explore how the adult's presence, awareness, and attunement facilitate children's sense of competence. Participants will deepen their knowledge about infant-toddler care and education in order to provide harmonious care.

Saturday, April 8 2017

Buckingham

Carol Morris, Ph.D

Engaging Compliance: Addressing Challenging Behavior & Promoting Prosocial Behavior

This presentation will explore theory-based explanations for children's challenging behavior and how those theories point to particular interventions. Participants will learn effective approaches to challenging behavior, including indirect techniques, such as room arrangement, and direct techniques, such as teaching skills, using positive language to guide children's behavior, focusing on and rewarding the behavior you want (instead of the behavior you don't want), providing acceptable alternatives (choices), and natural and logical consequences.

Council Oak

Dr. Jane Humphries & Kari Rains

A Fighting Chance: Supporting Young Children Experiencing Disruptive Change (Infant/Toddler Focus)

This session was created for early childhood professionals who embrace disruptive change in the lives of children. Based on real-life circumstances, this session will address a compliment of suggested activities and ideas intended to support strong organizational creation and sustainment while also working to provide environments that support the development of executive function and relationships to enhance stability in these children's lives.

Remington

Debbie Laurin

Finger-plays, Verses and Movement Games: The Musicality of Infants and Toddlers

A lively, fun presentation to inspire all who care for infants and toddlers with new ideas for movement and language. This session will include research on the musicality and rhythm of babies and toddlers and the importance of repetition and imitation.

2nd Floor Ballroom

Karen Smith

Family Relationships in Pakistan from an American Perspective

In 2016, Ms. Smith had an opportunity to visit Pakistan on a legislative culture exchange to meet with government, social services, health providers, educators and families about their culture, policies and actions. This presentation will describe observations from this cultural exchange.

12:00-1:15p.m.

Lunch & Keynote Speaker

International Ballroom

Amy Emerson, MD

Talking Is Teaching Across a Community

As more leaders across the country are becoming aware of the importance of the first few years of a child's life, many city-wide word campaigns are launching. Tulsa is proud to be one of the first two Talking Is Teaching cities, and one in which novel partnerships are evolving with business leaders, faith-based institutions and the medical community. Dr. Emerson will discuss these unique partnerships and ways in which we are building on the work occurring across the nation. Interventions such as the evidence-based Reach Out and Read and Legacy for Children will be included, as well as novel applications of utilizing existing trusted community partnerships.

1:30-3:00 p.m.

Closing Keynote

Betty Blaize

You are a Role Model

Your leadership sets the stage for what children can achieve and how our profession must improve. How can you affect brain development and the social conscience of our future generations? Join me to explore the possibility of how the future is yours to mold and unfold.

Presenters

Keynote Presenters



Betty B Blaize, M.Ed. is the CEO of Excellence for Children, providing leadership in childcare training throughout the country for over 25 years. She has also been an Early Head Start Implementation Planner for the past year and a half. She has served on the National Faculty for the Program for Infant Toddler Care, as an Infant/Toddler Specialist and Start-Up Planner for 35 Early Head Start Programs for a Head Start Technical Assistance Agency, as an elected official in Terrebonne Parish, and as Vice-President of the State Directors of Child Development.



Elsa Chahin is one of only two certified and accredited Pikler® Trainers in North America, and is currently President of the internationally renowned non-profit corporation, Pikler/Loczy USA, through which she carries on the mission of Dr. Emmi Pikler, that of raising healthy, happy children. A staunch advocate of early childhood education and development, Ms. Chahin, also a RIE® (Resources for Infant Educators) Associate, is that rare leader who not only brings passion and commitment to her work, but a deep knowledge coupled with both insight and generosity.



Toni and Robin Christie founded Childspace Early Learning Centres and subsequently the Childspace Early Childhood Institute in Wellington, New Zealand. Their work involves teaching adults about the importance of the early years. Toni and Robin have written books and resources, they publish a quarterly magazine, hold annual conferences, design and build environments for children and inspire early childhood practitioners through their keynote and workshop presentations.



Amy Emerson, MD, has enjoyed working with the families at Tulsa Educare for several years, and now is involved in Community Outreach for the Tulsa area in conjunction with the Talking Is Teaching campaign. She serves as a local Medical Champion for Reach Out and Read, and is a board member of the Oklahoma Reach Out and Read State Coalition.



Tamar Jacobson, Ph.D. was born in Rhodesia, now Zimbabwe, and traveled to Israel where she became a preschool teacher with the Israeli Ministry of Education. Currently, Dr. Jacobson is a Professor at Rider University, Tamar Jacobson presents at International, National, State and Regional levels. She is author of: *Confronting Our Discomfort: Clearing the Way For Anti-Bias* (Heinemann, 2003), and *Don't Get So Upset! Help Young Children Manage Their Feelings By Understanding Your Own* (Redleaf Press, 2008).



Peter L. Mangione, Ph.D., co-directs WestEd's Center for Child and Family Studies. Mangione is one of the lead developers of the Program for Infant/Toddler Care (PITC), a national model for training early childhood practitioners. He is one of the principal collaborators in the development the California Department of Education's Desired Results Developmental Profile. Mangione has served on advisory groups for the U.S. Department of Education and U.S. Department of Health and Human Services, and Zero To Three, and participated in meetings conducted by the National Academy of Sciences.



Rae Pica is a former adjunct instructor with the University of New Hampshire, she is the author of 19 books and has shared her expertise with such groups as the *Sesame Street* Research Department, the Head Start Bureau, Centers for Disease Control, the President's Council on Physical Fitness and Sports, Nickelodeon's *Blues Clues*, Gymboree, Nike, and school districts and health departments throughout the country. Rae also blogs for *Huffington Post*, is a member of the executive committee of the Academy of Education Arts and Sciences, and is cofounder of BAM Radio Network, the world's largest online education radio network.

Featured Presenters



Dr. Barbara Sorrels is Executive Director of The Institute for Childhood Education and the author of the award winning book, "Reaching and Teaching Children Exposed to Trauma." She started and directed two early childhood centers in Washington D.C. and Ft. Worth, Texas. She travels extensively training teachers, child-care providers, administrators, parents and agency personnel in early education, child development and trauma.



Paulina Zawadzka is an autism specialist, lecturer, teacher and therapist in Poland. She has visited autism organizations in Great Britain, Greece, Portugal, United States and Costa Rica sharing experiences and methods in therapy. In everyday work as a special education teacher at she focuses on supporting executive functions, communication and creativity development.

Presenters



Melinda Belcher, M.Ed. is a 15-year employee at the Child Care Resource Center, a program of the Community Service Council, and is the Resource and Referral Coordinator. This role includes the development of community collaborative and outreach, safety and security, disaster preparedness, database maintenance, management and supervision of the Resource and Referral contract and Disaster Resiliency Grant with Child Care Aware.



Teresa Berg, Ph.D., is the Early Care and Education Adult Career Development Coordinator at Tulsa Technology Center. In 2015 she received her Doctorate in Early Childhood Education at the University of Oklahoma. Teresa's career spans over 20 years of working with children and adults with developmental disabilities in childcare, community based settings, and public school settings.



Mira Tetkowsky Berkley, BS, MS & PhD, currently works as a Quality Improvement Specialist with QUALITYstarsNY (Quality Stars New York). She is an Associate Professor Emeritus from SUNY Fredonia. Mira has been fortunate to have made 5 visits to early childhood programs in Pistoia, Italy as well as visits to several North American Reggio-inspired programs.



Brenda Butchee, MA, has worked with families with young children for the past 38 years in both rural and urban settings. Ms. Butchee is a certified Child and Parenting Specialist and became endorsed in Infant Mental Health in 2010.



Tessa Chesher, DO, is a member of the psychiatry faculty at the OU School of Community Medicine and is board certified in general psychiatry and child and adolescent psychiatry. She is now an assistant professor of psychiatry and an Oxley Chair in Child and Adolescent Psychiatry in the Department of Psychiatry at the OUSCM.



Jana Cornelius, BS, M.Ed. has 26 years of experience in the early childhood field. Currently she is the Education Services Quality Assurance Specialist for the Center for Early Childhood Professional Development (CECPD). She has completed the Team Quest Training and Development Certificate Program, Adult Education Training Series, Educator Mentoring and Advanced Training in the Field of Early Childhood Education.



Nichole Dewberry has worked in the early childhood field for 14 years. In her current position at the Center for Early Childhood Professional Development (CECPD), she reviews, revises, and writes curriculum for child care and out-of-school time professionals throughout the state of Oklahoma.



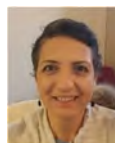
Lisa Eshenour, BS & MS, has been a Pre-K teacher as well as a researcher at the Early Childhood Education Institute. She is currently the Site Coordinator for Educare MacArthur for the Educare Implementation Study where she oversees data collection and completes child assessments and classroom observations.



Georgia and Ken Frawley produced the We Sign DVD series of combining music and ASL for learning core concepts and co-wrote a series of books called Sign to Speak that provide parents, teachers and caregivers with all the how-to's of using ASL with infants and toddlers. Georgia was named Educator of the Year for the Rialto Unified School District in 2002 and Ken has written over 200 children's songs used around the country and is an award-winning producer of video products for children.



Imelda Galvez, BS in Early Childhood Education from the University of Oklahoma-Tulsa, has been a teacher assistant, PreK teacher, infant-toddler teacher and is now a researcher at the Early Childhood Education Institute. She is currently working as the Educare Kendall Whittier Site Coordinator for the Educare Implementation Study.



Blanca Gonzalez, BS, has been an Associate Teacher, a Lead Teacher, Family Advocate, and a Volunteer. Currently she is a researcher at the Early Childhood Education Institute. As a Research Associate, Ms. Gonzalez collects data from child assessments and classroom observations, she is also the Bilingual Trainer for bilingual child assessments.



Dr. Jane Humphries has been a child care director of an NAEYC accredited program that experienced and was resilient after a major man-made disaster, child and parenting specialist, college instructor, researcher, and program administrator. She has authored several articles featured in Exchange® and her latest book co-authored with Kari Rains titled, A Fighting Chance: Supporting Young Children Experiencing Disruptive Change, is due to be published by Redleaf Press® in May 2017.

Janine J. Joseph has been with the State of Georgia for 33 years and was the initial program manager of the Quality Rated Program. In addition, she is the Director of ACI, an independent contracting agency that provides consultation on early childhood and adoption. She has been certified in Playground Safety through NPSI, CLASS through Teaching Strategies, and, along with Ka-BOOM!, the United Way, and Quality Rated she worked to build 28 playgrounds at child care programs in the Metro Atlanta area.



Beverly Kovach is a renowned Infant/Toddler Specialist and founder of Little Learners Lodge. Ms. Kovach mentored directly with Magda Gerber and is one of only two North American pedagogues certified by Anna Tardos to train in the Pikler® Model for young children. She is an author, keynote speaker, Trainer of Trainers facilitator, and is certified to train in Montessori (MACTE 0-3), Pikler® and Resources for Infant Educators (RIE®). She currently serves as President and Founder of Waverly Place providing childcare training and consultation services.

Presenters



Debbie Laurin is a Ph.D. Candidate in the Early Childhood Program at the University of Oklahoma-Tulsa. She was a Waldorf Early Childhood Teacher and Early Care and Education College Instructor in Canada prior to moving to the United States.

Debbie Trained at the Pikler Institute in 2014 and 2016 and with Pikler® USA. She brings a vast repertoire of fingerplays, verses, and movement games for sharing with all who love to spend time with young children.



Carol Morris, Ph.D. is an Applied Developmental Psychology from George Mason University, Masters' degrees in Lifespan Human Development and Psychology, has worked in the early childhood field, in a variety of capacities. Dr. Morris also taught at Oklahoma University-Tulsa as the "infant-toddler person" for a year before life circumstances took her to North Carolina.



Susan Patrick, Ph.D., is an Assistant Professor of Early Childhood Education at Northeastern State University. She has over 20 years' experience working with children, teachers, and families in group care settings. Susan has studied the Pikler approach since 2008 and received her doctoral degree from the University of Oklahoma in 2016, with a focus on relationship based practice.



Kim Quinn, BSN, M.Ed. and Montessori Certification for 3 – 6 year olds, is both a Registered nurse and a Montessori teacher that has been working with children, families, child care providers and teachers for over 30 years in a variety of settings.



Kari Rains is a Certified Child and Parenting Specialist and Child Development Specialist with over a decade of clinical work in the early intervention program provided in the state of Oklahoma. She has served as an adjunct instructor, published two books and numerous research articles in the field of child development to include articles in Exchange®.



Cristy Roberts has been the Training Director for the ECEI since June of 2014. She has been a trainer for over 20 years helping families, classroom teachers, child care centers, Head Start agencies and school districts commit to transformational change.



Carol Rowland, Master's degree in Human Development and Family Sciences . She is a Program for Infant Toddler Care certified trainer, endorsed Infant Family Specialist with Oklahoma Association for Infant Mental Health and a Toddler CLASS certified trainer. Currently Rowland works as a Professional Development Specialist for Oklahoma Early Childhood Program.



Jessica Smith, BA in Child Development from Chico State University, has worked in child care in three different states over the past 15 years. Her roles have been teacher, Resource & Referral Specialist, and Child Care Consultant.



Karen Smith, Master's and Bachelor's degrees in Human Development and Family Studies from University of Arkansas, has been employed in the early childhood field for over 35 years. She currently serves as the Director of the Child Care Resource Center, a program of the Community Service Council.



Beth Sullins has worked at the ECEI for over eight years, first as a Project Coordinator for the Scholars in Excellence Evaluation Project. She is currently the Assistant Director of Administration for the Institute. She also helps coordinate the Early Childhood Leadership Institute, an annual conference for early childhood professionals in the Tulsa area.



Rebecca Taylor, Bachelor's degree in Early Childhood Education from NSU, is a Programs for Infant Toddler Care certified trainer, certified in Toddler CLASS, member of Oklahoma Association for Infant Mental Health. She has worked with CAP Tulsa as an infant/toddler teacher, Two-year-old classroom teacher, Instructional Coach for infant/ toddler and two's and currently works as a Professional Development Specialist for Oklahoma Early Childhood Program.



Colleen Walling is a lead infant/toddler teacher at Tulsa Educare MacArthur. She has a Bachelor's degree in Early Childhood Education, and is especially passionate about working with infants, toddlers, and their families. Colleen is a strong proponent of respect based care and practices, and she tries to incorporate Pikler and RIE ideas into her daily work.



The Child Care Resource Center is a program of Community Service Council (CSC), a United Way Agency. CSC has been a non-profit leader in community planning since 1941. Working with area partners, CSC confronts challenges to health, social, education and economic opportunities and strategically advances effective community-based solutions. This is done through research, planning, networking and mobilizing resources.

Printing generously donated by Tulsa Tech