

HOMELESSNESS: MORE THAN A SHELTER PROBLEM

Despite Tulsa's improved collaboration, data integration and use of evidence-based and innovative practices, and scaling up programming for rapid re-housing and permanent supportive housing, we have seen a 7% increase of Tulsans experiencing homelessness over the last 10 years.

Most of the data in this handout is taken from the Community Service Council's *Homelessness in Tulsa* Report. View the full report at csctulsa.org/housing-homelessness

2007	2017	7% INCREASE ↑
5,496	5,854	

More individuals are entering the homeless system than exiting.



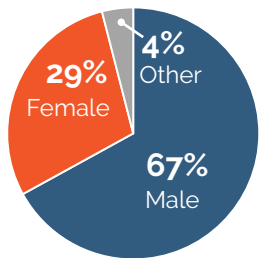
COORDINATED BY THE
COMMUNITY SERVICE COUNCIL

5,854

Number of individuals and families residing in Tulsa County emergency shelter and transitional housing programs.

It's not enough to set a housing target, reach it and call it a day. Solving the issue of homelessness is a process, not an endpoint.

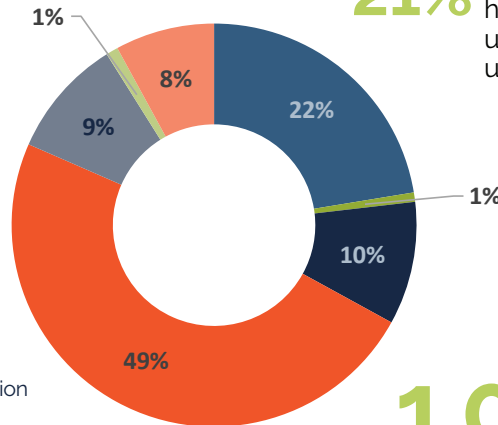
WHO IS HOMELESS IN TULSA?



Median Age
42

- African American
- Asian
- Native American
- Caucasian
- Multi-Racial
- Hawaiian
- No Response

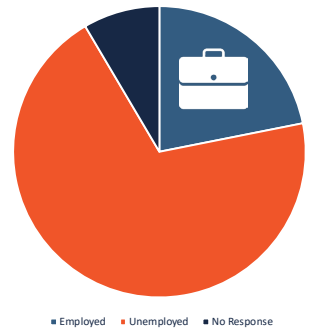
7% of the population being Hispanic.



21% of individuals experiencing homelessness were living in unsheltered locations in 2018, up 30% from the prior year.



22% were employed



3,727

students experienced homelessness in 2018 within Tulsa and Union Public Schools districts.

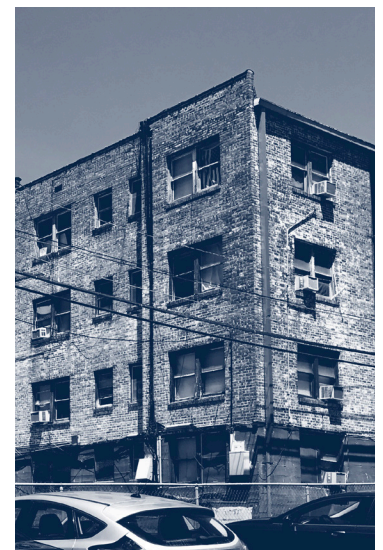
1,016

were unaccompanied youth & young adults

HOMELESSNESS IS A HOUSING PROBLEM

- 14% of Tulsans reported experiencing times in the past 12 months when they were unable to provide adequate shelter or housing for themselves and their family.¹
- 48% of renters in Tulsa say it's difficult or very difficult to find affordable housing.²
- A single parent must make **\$23.08 per hour** to afford housing and support one child.³
- 8,554 individuals and families were on the waitlist for a Housing Choice Voucher in 2017.⁴
- Tulsa has the **11th highest** eviction rate in the nation, with 1,200+ evictions filed per month and 14,000 per year.⁵

1 Gallup Citivoice Survey, January 2019; 2 Ibid.; 3 MIT Living Wage Calculator: <http://livingwage.mit.edu/counties/40143>; 4 CSC's 2017 Homeless in Tulsa Report; 5 *Tulsa World*: www.tulsaworld.com/homepagelatest/with-one-of-the-worst-eviction-rates-in-the-country/article_b8d8af14-a15f-53d9-b6dd-d8e936784ee2.html



LEARN MORE & STAY CONNECTED
CSCTULSA.ORG/AWH4T-PLAN
#AWH4T | To donate, text AWH4T to 898-211



HOMELESSNESS IS A SYSTEMS PROBLEM

CORRECTIONS

- 1,199 individuals in Tulsa County jail were homeless upon arrest in 2017.
- One focus group participant said: "If you have a felony, they won't help you with housing. They don't give a second chance."

HEALTHCARE

- 32% of individuals experiencing homelessness in Tulsa have a disability.
- Healthcare was one of the top 5 needs requested by individuals experiencing homelessness in 2017.

FOSTER CARE

- 12% of individuals experiencing homelessness had been in foster care prior to homelessness.
- 33% of young adults experiencing homelessness (ages 17-24) had been in foster care prior to homelessness.

BEHAVIORAL HEALTH

- Oklahoma is ranked 45th for youth mental illness and access to care.
- Tulsa has only 103 psychiatric beds available to public mental health clients, less than 1/4 of the public beds needed.
- 44% of individuals experiencing homelessness have a mental illness.

DOMESTIC VIOLENCE

- 17% of individuals experiencing homelessness had experienced domestic violence.
- 72% of women attribute their homelessness to domestic violence.
- One focus group participant said: "I was evicted because my inebriated ex-husband came to the property, and [the landlord said] he wouldn't have been there if it weren't for me."

VETERANS AFFAIRS

- 14% of individuals experiencing homelessness in Tulsa are veterans.

BARRIERS & SOLUTIONS TO ADDRESSING HOMELESSNESS

Top 5 barriers to addressing homelessness in Tulsa identified by service providers in a survey administered by the Community Service Council in 2018.

- 1** Lack of affordable housing
- 2** Transportation challenges
- 3** High barriers to housing access
- 4** Lack of funding/funding restrictions
- 5** Lack of resources/services for people at-risk of homelessness



LEARN MORE & STAY CONNECTED > [CSCTULSA.ORG/AWH4T-PLAN](https://csctulsa.org/awh4t-plan)

#AWH4T | TO DONATE, TEXT AWH4T TO 898-211

